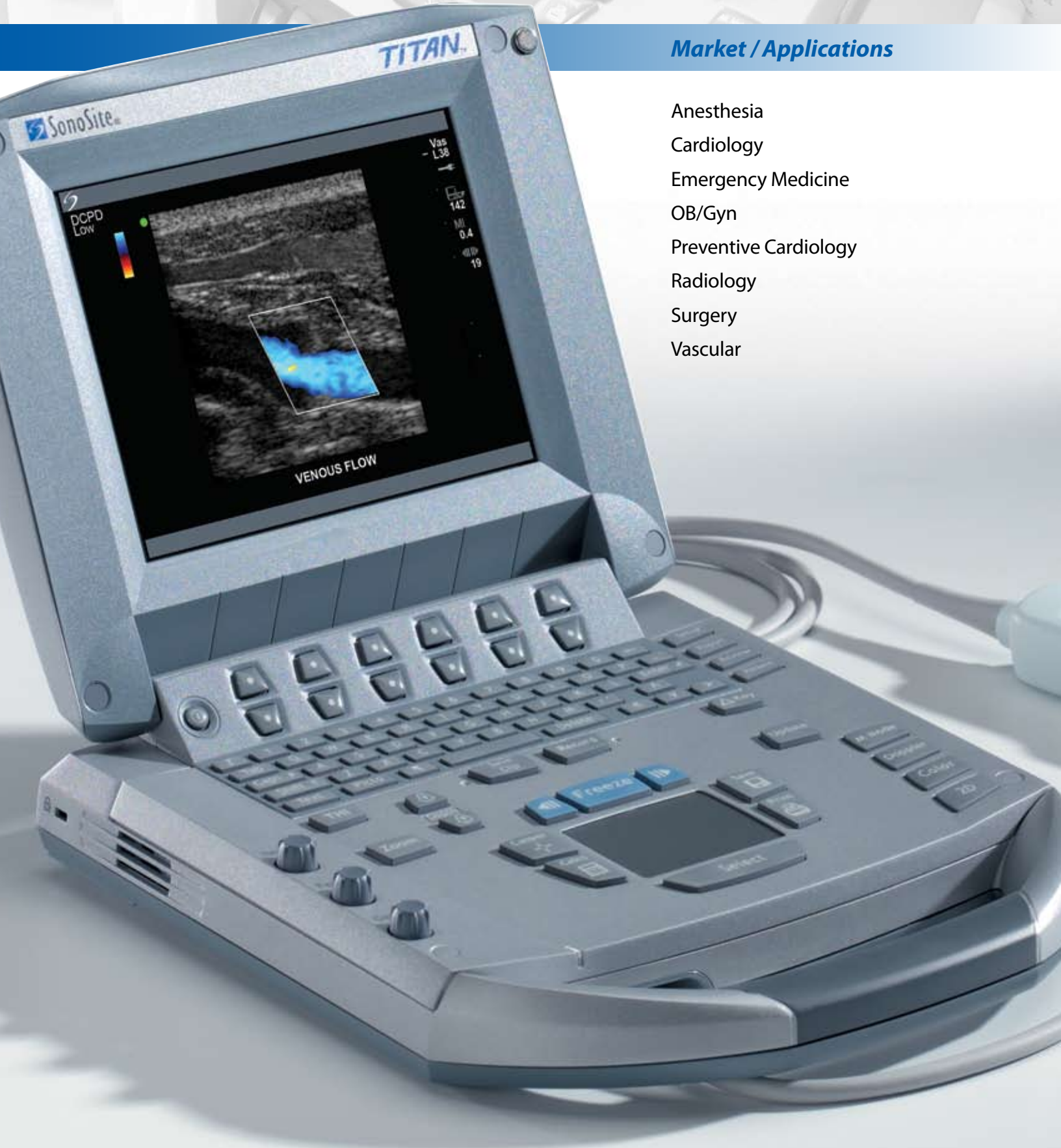


Market / Applications

- Anesthesia
- Cardiology
- Emergency Medicine
- OB/Gyn
- Preventive Cardiology
- Radiology
- Surgery
- Vascular



TITAN® System Specifications

System Specifications

System weight: 7.7 lbs.
System dimensions: 11.9" L x 10.9" W x 3" H
Display: Integrated fully digital 8.4" (diagonal) TFT color Liquid Crystal Display

Mobile Docking System

Mobile Docking System dimensions: 31.9" L x 22.6" W
x adjustable height 33.2" to 45.1"
Storage available for fully integrated printer, DVD and/or VCR storage area
Optional connector for 3 transducers – changes by simple electronic switching
Optional 11.8" (diagonal) monitor

Imaging Modes

2D
Split screen
Zoom
Color power Doppler
M-Mode
3 sweep speeds, 1/2 1/2, 1/3 2/3 or full screen options
Pulsed wave (PW) Doppler
Continuous wave (CW) Doppler
Velocity based color flow Doppler
Duplex imaging
3 sweep speeds, 1/2 1/2, 1/3 2/3 or full screen options
Tissue Harmonic Imaging (THI)

Transducers

All transducers are lightweight with rapid, pinless connectors and feature a user selectable menu to adjust frequency settings to suit the patient's size. Settings are Penetration, General and Resolution imaging.
C60/5-2MHz broadband curved array for general purpose, abdominal and obstetric imaging. 2D, CPD, DCPD, PW Doppler.
ICT/8-5MHz broadband intracavitary transducer for obstetric and gynecologic imaging. 2D, CPD, DCPD, PW Doppler.
C11/8-5MHz broadband tightly curved array for neonatal and pediatric imaging. Applications include general imaging, abdominal, cardiac and neonatal heads. 2D, CPD, velocity color, PW and CW Doppler.
C15/4-2MHz broadband tightly curved array. Applications include adult cardiology general imaging, abdominal. 2D, CPD, velocity color, PW and CW Doppler.
L25/10-5MHz broadband linear array. Applications include nerve, vascular, and superficial imaging. 2D, CPD.
L38/10-5MHz broadband linear array. Applications include small parts, breast, vascular, musculoskeletal & superficial imaging. 2D, CPD, velocity color, PW Doppler.
HST/10-5MHz broadband linear array. Applications include intraoperative vascular & superficial imaging. 2D, CPD, DCPD, PW Doppler.
C8/8-5MHz broadband intracavitary transducer for prostate imaging. Biopsy guide available. 2D, CPD, DCPD, PW Doppler.

Remappable Controls

Softkeys to drive advanced features.
Delta key: user selectable functions can be assigned to the delta key for increased ease of use.

System Parameters

System dynamic range: Up to 155dB
Frame rates up to 150Hz maximum acquisition, 60Hz internal video display.

Image Storage and Cine

Storage: High capacity using flash card. 64MB card stores 128 images (approx).
Cine: Review of up to 220 frame-by-frame images.
Connect directly to a PC with SiteLink Image Manager software using a USB cable from the system. Allows transfers of high resolution bitmap images. Software allows batch compression to JPG on PC.
Image transfer can be active while live scanning on TITAN.

Clinical Analysis Package

OB Calculation Package
Obstetric package includes fetal biometry measurements via user selectable authors.
Vascular Calculation Package
Vascular package includes Lt/Rt CCA, ICA, ECA, ICA/CCA Ratio, user defined ratio, angle correction, volume flow.
Volume calculations via diameters.

Measurement Tools

2D
Distance calipers – two sets
Ellipse for area and circumference measurements
M-mode
Distance and time caliper set
Heart rate
Doppler
Velocity caliper – two sets provide peak velocity RI & S/D ratio.
Volume Flow

Power

Operates via battery or AC power – from 1.5 up to 4 hours on fully charged battery, new battery life depends on the active functions used and keystrokes.
Battery: Rechargeable lithium ion
AC: Via universal power adapter, 100-240 VAC, 50-60 Hz

Display Annotation

Text and pictograms
User selectable application specific text via function keys.

Peripheral Connections

Composite video output (NTSC/PAL) to video cassette recorder, video printer or external monitor.
Connect to a PC via USB to download high resolution bitmap images.
S-video output
Ethernet output
VGA output

Connectivity

DICOM print and storage class software available
DICOM worklist

Software (post-processing)

SonoCalc™ IMT automated edge detection software for assessment of intima media thickness
SiteLink image management software (DICOM and Non-DICOM).



SonoSite

www.sonosite.com

WORLDWIDE HEADQUARTERS

SonoSite, Inc., 21919 30th Drive SE, Bothell, WA 98021-3904 USA
Tel: (425) 951-1200 Toll Free: (877) 657-8050 Fax: (425) 951-6800
E-mail: admin@sonosite.com

EUROPEAN HEADQUARTERS

SonoSite Ltd., Alexander House,
40A Wilbury Way, Hitchin,
Herts SG4 0AP, United Kingdom
Tel: +44 (0)1462 444800
Fax: +44 (0)1462 444801
E-mail: europe@sonosite.com

SonoSite Worldwide Offices

SonoSite Australasia Pty Ltd – Australia	1-300-663-516
– New Zealand	0-800-888-204
SonoSite KK - Japan	81-3-5304-5337
SonoSite SARL - France	31-1-69-18-96-30
SonoSite GmbH - Germany	49-(0)91-31-97-79-29-0
SonoSite Iberica SL - Spain	34-91-640-49-11
SonoSite Ltd - China - Shanghai	86-21-523-966-93
SonoSite Canada Inc. - Canada	1-888-554-5502