

# Creating Value in Portable Color Ultrasound



## SONOACE R3



see it all ● ● ●  
**MEDISON**

# Introducing the portable color ultrasound system everyone can image with.

The SONOACE R3 digital color ultrasound system has a reputation for delivering quality imaging in the various diagnostic applications. Now we have shrunk that imaging power down into a compact size package that delivers virtually all the diagnostic capabilities of a conventional cart-based system anywhere. **Welcome to the SONOACE R3, the value choice in portable color.**



## Full-featured digital imaging on your desktop

The SONOACE R3 is a full-featured portable digital color ultrasound system with virtually all the imaging capabilities of a cart-based system.

- Full Spectrum Imaging™
- Color and power Doppler
- Freehand 3D
- Color, power and PW Doppler
- Quick Scan™
- Harmonic imaging
- Cardiac package



## Organize and integrate your workflow

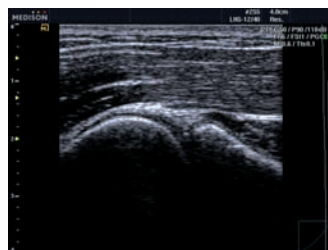
While the SONOACE R3 is a versatile diagnostic tool in its own right, it is an equally powerful collaborative tool. In addition to the basic review, analysis, networking, and archival capabilities of the SonoView™ provides the most advanced review and analysis capabilities available.

- SonoView™ Pro
- DICOM 3.0
- USB 2.0

## Expand your imaging horizons

Last but not least, the SONOACE R3 delivers powerful ultrasound imaging in an ergonomic package that can be used anywhere. The intuitive control interface features a full keyboard and large, backlit keys for all major functions. A custom cart featuring probe holders and plenty of mounting room for peripherals is also available.

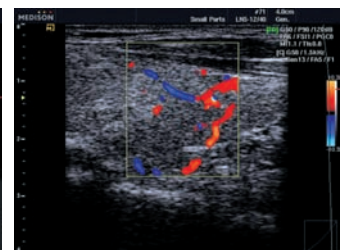
- 15" LCD monitor
- Two probe ports
- Ergonomic handle in front panel
- Easily height adjustable control panel
- Lightweight



Shoulder transverse in 2D



Kidney in power Doppler mode



Thyroid in color Doppler